

Mi Casa Hawaii



Artist's perspective

Welcome to Mi Casa,
your tropical-inspired home in the Bay Area.

Mi Casa opens its doors to you and your family
and invites you to experience the pleasures
of resort-style living

It also offers accessible and modern conveniences
as it is very near stylish malls and city access points.

At Mi Casa Hawaii Tower, being at home is having a vacation every day.



Hawaii Tower

HAWAII UNIT FINISHES

AREA	FLOOR	WALL	CEILING
Living & Dining	Homogenous Tiles	Painted	Painted Cement
Kitchen	Homogenous Tiles	Painted	Painted Gypsum
Bedrooms	Engineered Wood Flooring	Painted	Painted Cement
T&B (Master's, Common & Powder Room)	Homogenous Tiles	Homogenous Tiles	Painted Gypsum
Balcony	Ceramic Tiles	Painted	Painted Cement
Utility T&B	Ceramic Tiles	Ceramic Tiles	Painted Gypsum
Utility Area	Ceramic Tiles	Painted	Painted Cement



www.federalland.ph

Property Specialist:

LS NO. 033484

Project Completion: January 31, 2023 (Hawaii Tower) | April 30, 2024 (Maui Tower)
Project Location: Metrobank Ave., Metro Park, EDSA cor. Macapagal Blvd., Pasay City
Developer: Federal Land Inc.
Owners: Pasay - Hongkong Realty Dev. Corp. & Harbour Land Realty and Dev. Corp.
HLURB ENCR AA-2019/05-2363



brings you

Mi Casa Hawaii Tower

Your tropical-inspired home
in Metro Park, Bay Area



Artist's Perspective of the Barbeque Grill Area



Artist's Perspective of the Gazebo



Artist's Perspective of the Wet Play Area



Artist's Perspective of the Children's Playscape

OUTDOOR AMENITIES

- Lap Pool
- Outdoor Shower
- Kiddie Pool
- Lounge Pool
- Wet Play Area
- Barbeque Area
- Children's Playscape
- Gazebo

INDOOR AMENITIES

- Gym
- Movie Room
- Kid's Play Room
- Function Room
- Day Care Room
- Lounge Area
- Meeting Room



HAWAII

MAUI

Future Development

Architect's layout

HAWAII TYPICAL FLOOR PLAN (5th-17th Floor)

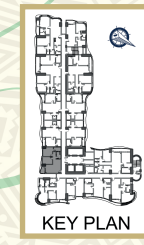
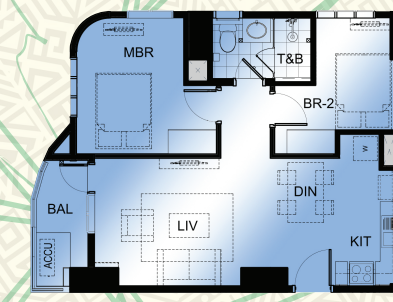


Total No. of Units: 158
Units per Floor: 14
Unit Mix:

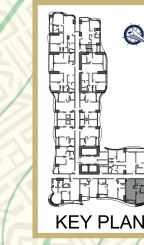
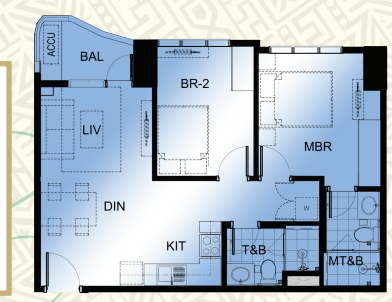
- 3 Bedroom
- 2 Bedroom
- 1 Bedroom



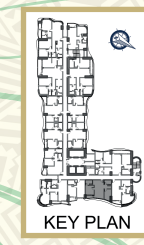
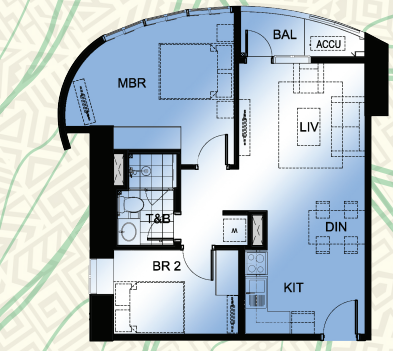
Unit K 2 BR 64.00 sq m



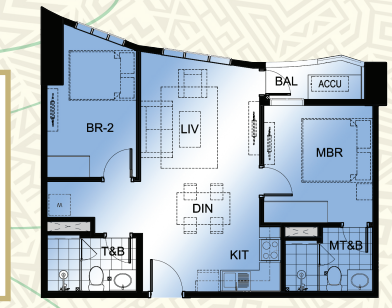
Unit F 2 BR 65.50 sq m



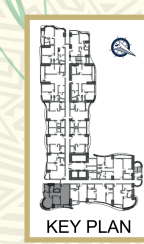
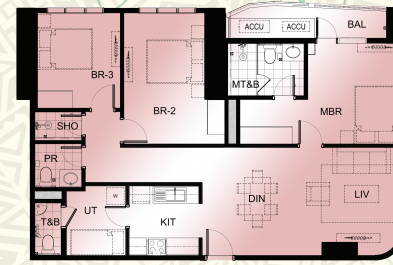
Unit B 2 BR 64.00 sq m



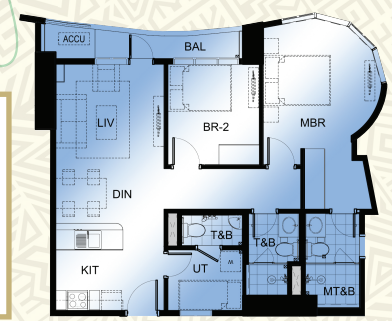
Unit C 2 BR 66.00 sq m



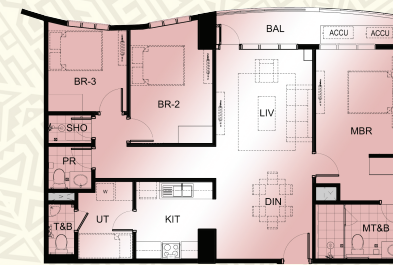
Unit J 3 BR 116.00 sq m



Unit E 2 BR 84.00 sq m



Unit A 3 BR 113.50 sq m



Unit D 1 BR 45.50 sq m



Architect's layout